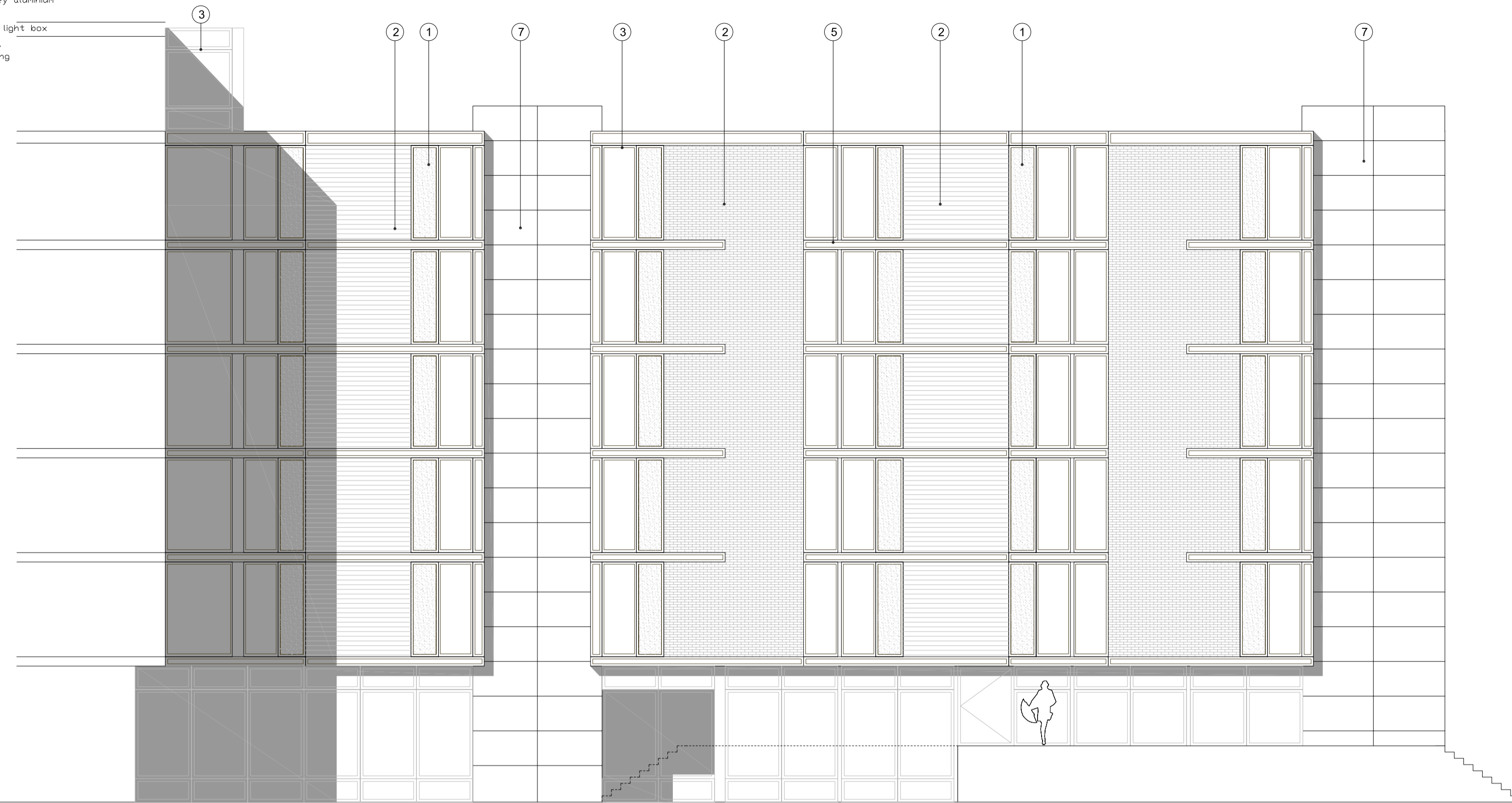
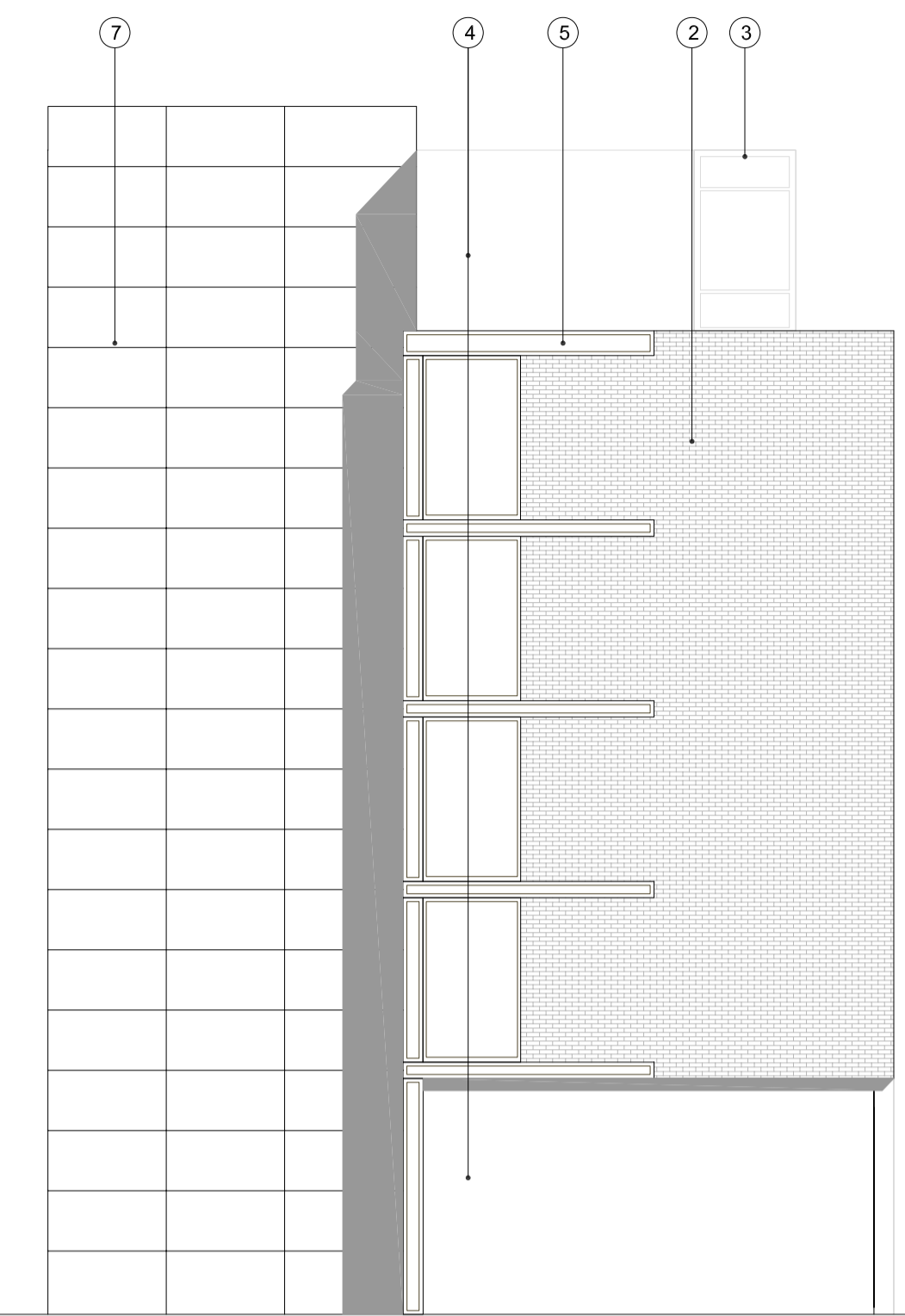


- Materials:
1. Rosewood timber panel
 2. Bricks cladding, London stock
 3. Powder coated grey aluminium frame
 4. Render
 5. Steel section with light box inserted
 6. Open sided balcony
 7. Sheet metal cladding
 8. Lift over run

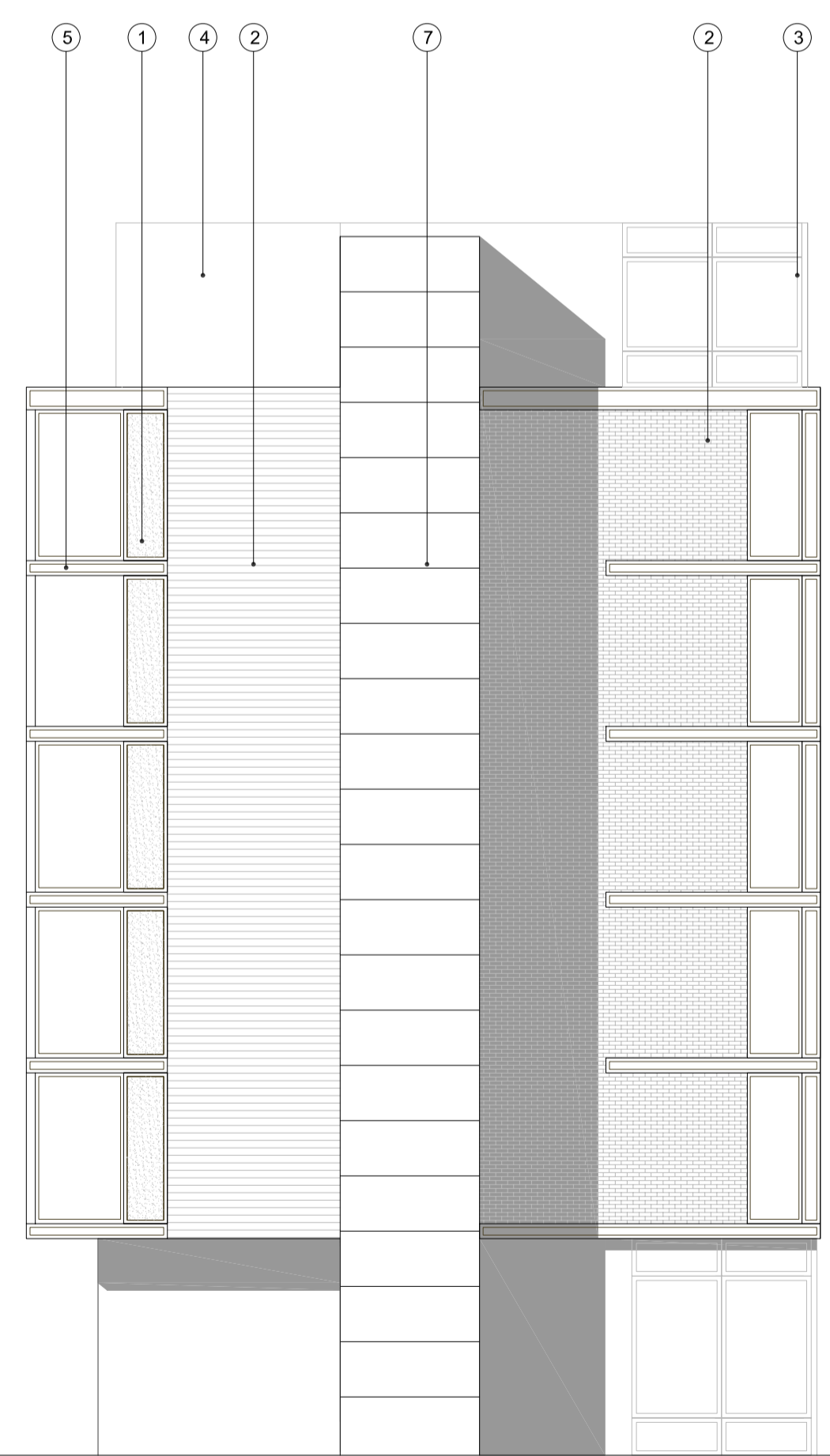


ENFIELD ROAD WING'S REAR ELEVATION

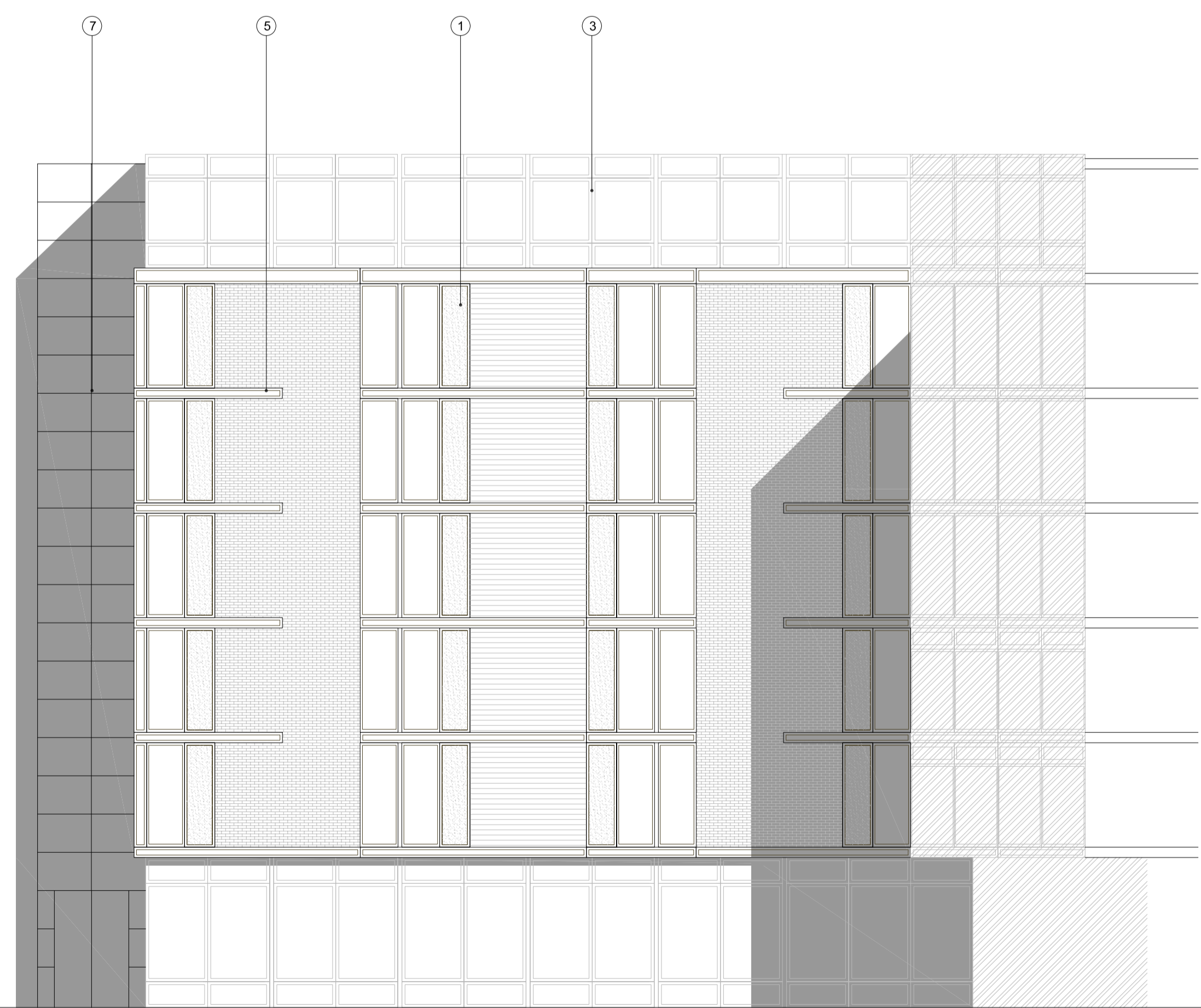
THIS DRAWING HAS BEEN PREPARED SOLELY FOR THE CLIENT AND PROJECT LISTED AND MAY BE SUBMITTED AS PART OF A PLANNING APPLICATION AND NOT BE REPRODUCED OR USED IN ANY OTHER MANNER OR FOR ANY OTHER PURPOSE.
 OTHERS MUST NOT COPY, REPRODUCE OR TRANSMIT THIS DRAWING OR ANY PART OF IT WITHOUT THE WRITTEN PERMISSION OF NEALE + NORDEN LIMITED.
 NEALE + NORDEN LIMITED ACCEPTS NO LIABILITY FOR THE ACCURACY OR SUITABILITY OF THE DRAWINGS OR FOR ANY OTHER REASON.
 THIS DESIGN IS THE COPYRIGHT OF NEALE + NORDEN LIMITED. THE DRAWING WILL NOT BE REPRODUCED IN PART OR IN WHOLE WITHOUT PRIOR PERMISSION.
 ISSUE NO. 10/10 TO PROVISIONAL STRUCTURAL PARTY WALLS & RIGHTS OF LIGHT TO BE FULLY EVALUATED BY SPECIALIST CONSULTANTS.



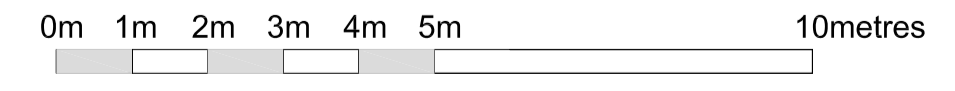
ENFIELD ROAD WING'S SIDE ELEVATION



KINGSLAND ROAD WING'S SIDE ELEVATION



KINGSLAND ROAD WING'S REAR ELEVATION



K I N G S L A N D R O A D

SIDE AND REAR ELEVATIONS